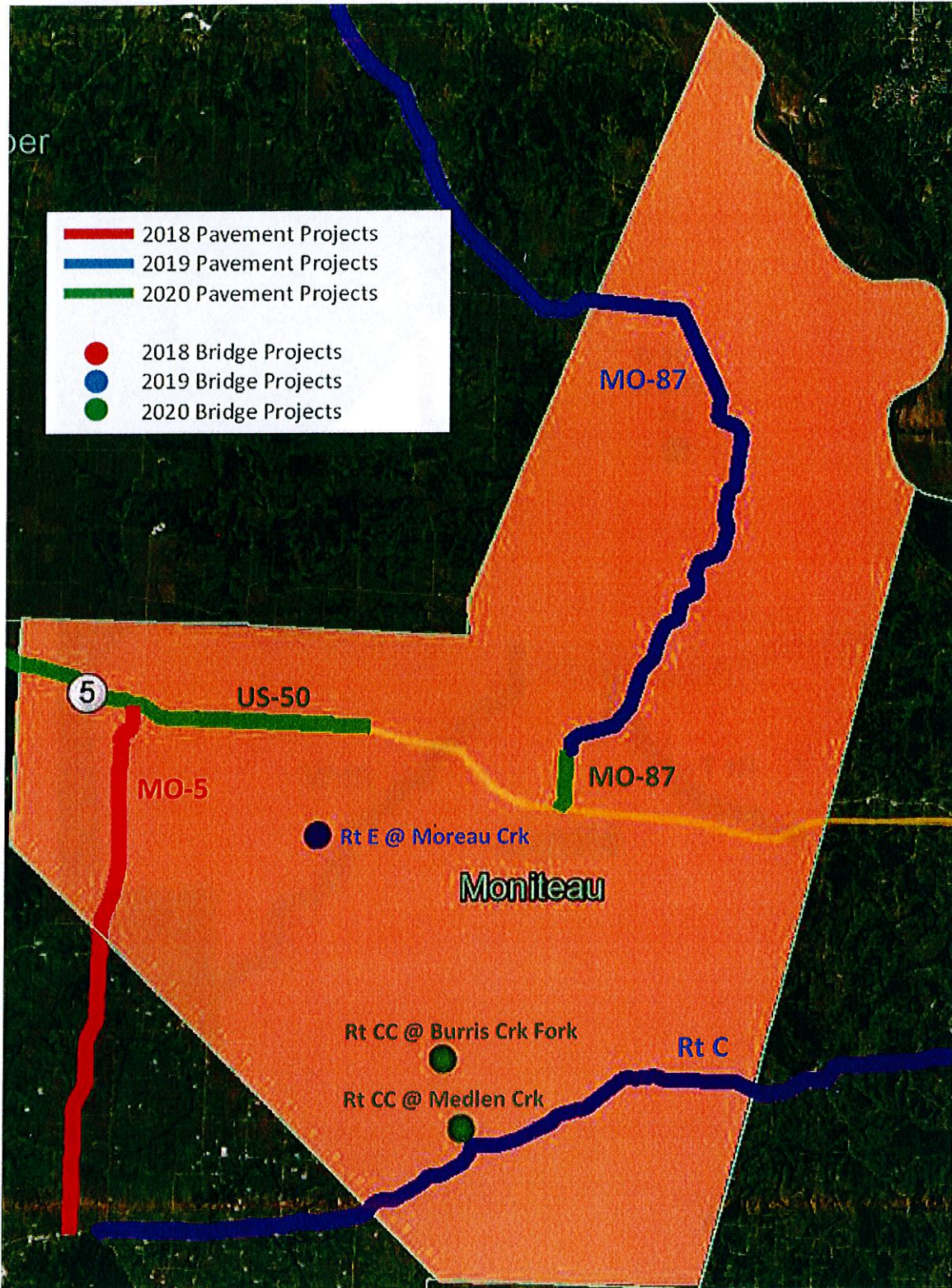


MONITEAU 2018-2020 PROJECTS



Moniteau County Pavement Projects 2018-2020

Year	County	Route	Location Description	New to STIP
2018	Moniteau	MO 5	from RT 50 to RT 52	
2019	Moniteau	RT C	from RT 52 in Versailles to Ellis Blvd in Jefferson City	X
2020	Moniteau	MO 87	from RT O in California to US 50 (City work ADA work)	X
2020	Moniteau	US 50	from Pettis County to East of RT H	X

Moniteau County Bridge Projects 2018-2020

Year	County	Route	Intersects	Treatment	Bridge	New to STIP
2019	Moniteau	RT E	Moreau Cr	Redeck	R0435	
2020	Moniteau	RT CC	Burris Creek Fork	Redeck	A1836	X
2020	Moniteau	RT CC	Medlen Creek	Redeck/Replacement	A1837	X