

# Cole County, MO



## Sidewalk Assessment 2012



### Table of Contents

Criteria.....	p. 1
Community Sidewalk Maps.....	p. 2
Sidewalk Surveys.....	p. 9

## Criteria

The incorporated communities of Centertown, Lohman, Russellville, St. Thomas, Taos, and Wardsville were included in the 2012 assessment. The City of Jefferson and the City of St. Martins were excluded because they are part of the Capital Area Metropolitan Planning Organization (CAMPO).

All sidewalks in these communities were assessed on their current conditions in February and March of 2012 by staff at the Mid-Missouri Regional Planning Commission. The chart below depicts the overall condition of sidewalks in the county:

	Condition in Linear Feet			Total Sidewalk
	Good	Fair	Poor	
<b>Centertown</b>	0	1,143	764	<b>1907</b>
<b>Lohman</b>	0	0	982	<b>982</b>
<b>Russellville</b>	1,948	1,018	7,254	<b>10220</b>
<b>St. Thomas</b>	401	773	0	<b>1174</b>
<b>Taos</b>	2,707	0	0	<b>2707</b>
<b>Wardsville</b>	0	945	0	<b>945</b>
	<b>Total Good: 5,056</b>	<b>Total Fair: 3,879</b>	<b>Total Poor: 9,000</b>	<b>17,935</b>

The following criteria were used in assessing conditions. These assessment criteria are being used for assessments by all Regional Planning agencies across Missouri.

**Good:** Unlikely to hinder mobility of the average pedestrian. The sidewalk is free from significant cracking, buckling, gravel surfaces, or other debris which would impede pedestrian traffic.

**Map key:** Green

**Fair:** Uneven and distressed surface that hinders mobility of the average pedestrian. The sidewalk contains surface cracks, vegetation overgrowth, or debris.

**Map key:** Yellow

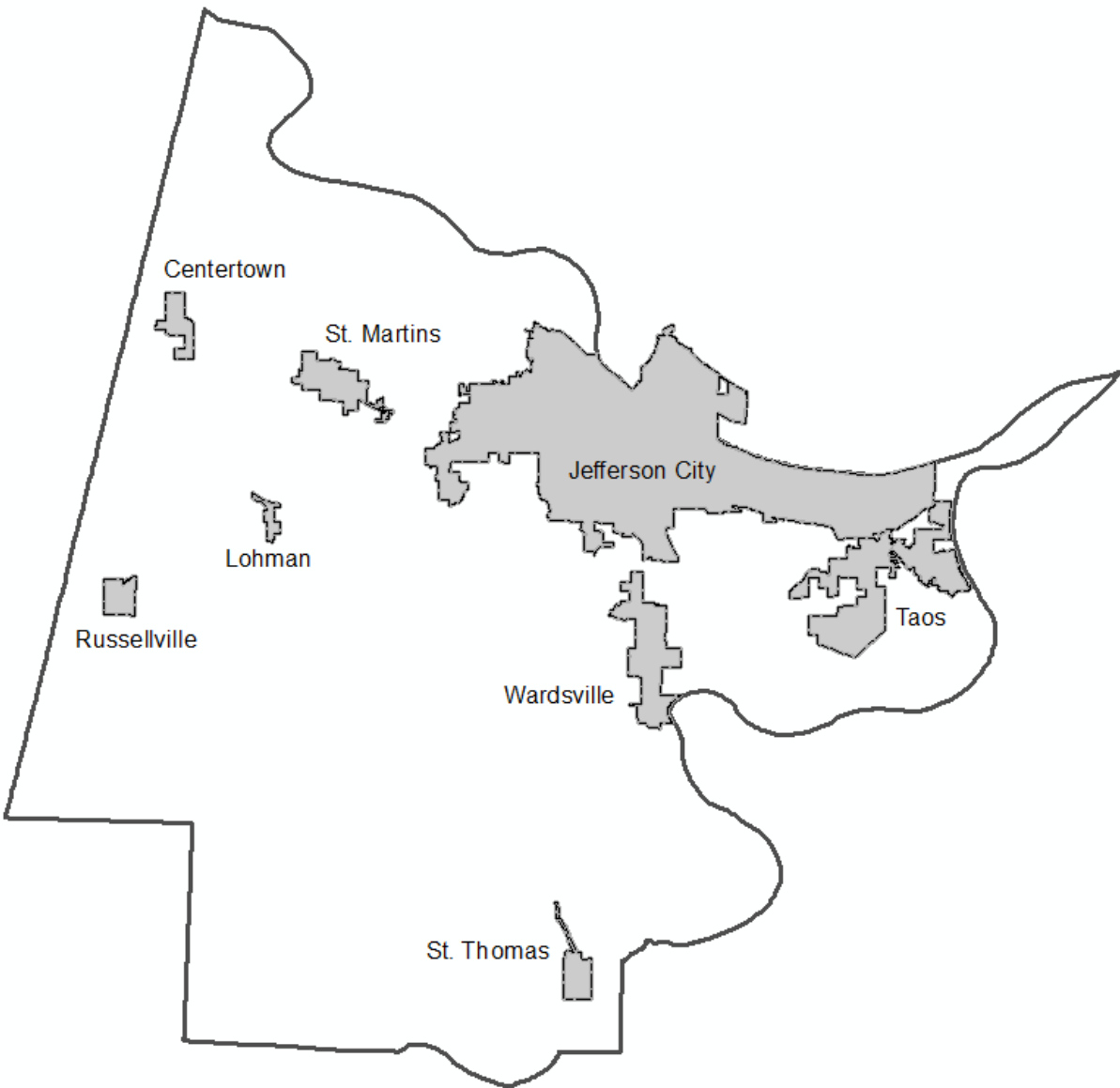
**Poor:** Impassable to mobility impaired pedestrian; hinders mobility of average pedestrian. The sidewalk has deep cracking or buckling, significant vegetative overgrowth, poor drainage, bulging surface (due to tree roots) and / or debris such that pedestrian travel would be impeded.

**Map key:** Red

**Gap:** No sidewalk is present. Not mapped.

## Community Sidewalk Maps

The following maps were created to illustrate location and condition of sidewalks within the communities of Centertown, Lohman, Russellville, St. Thomas, Taos, and Wardsville.



# Centertown, MO

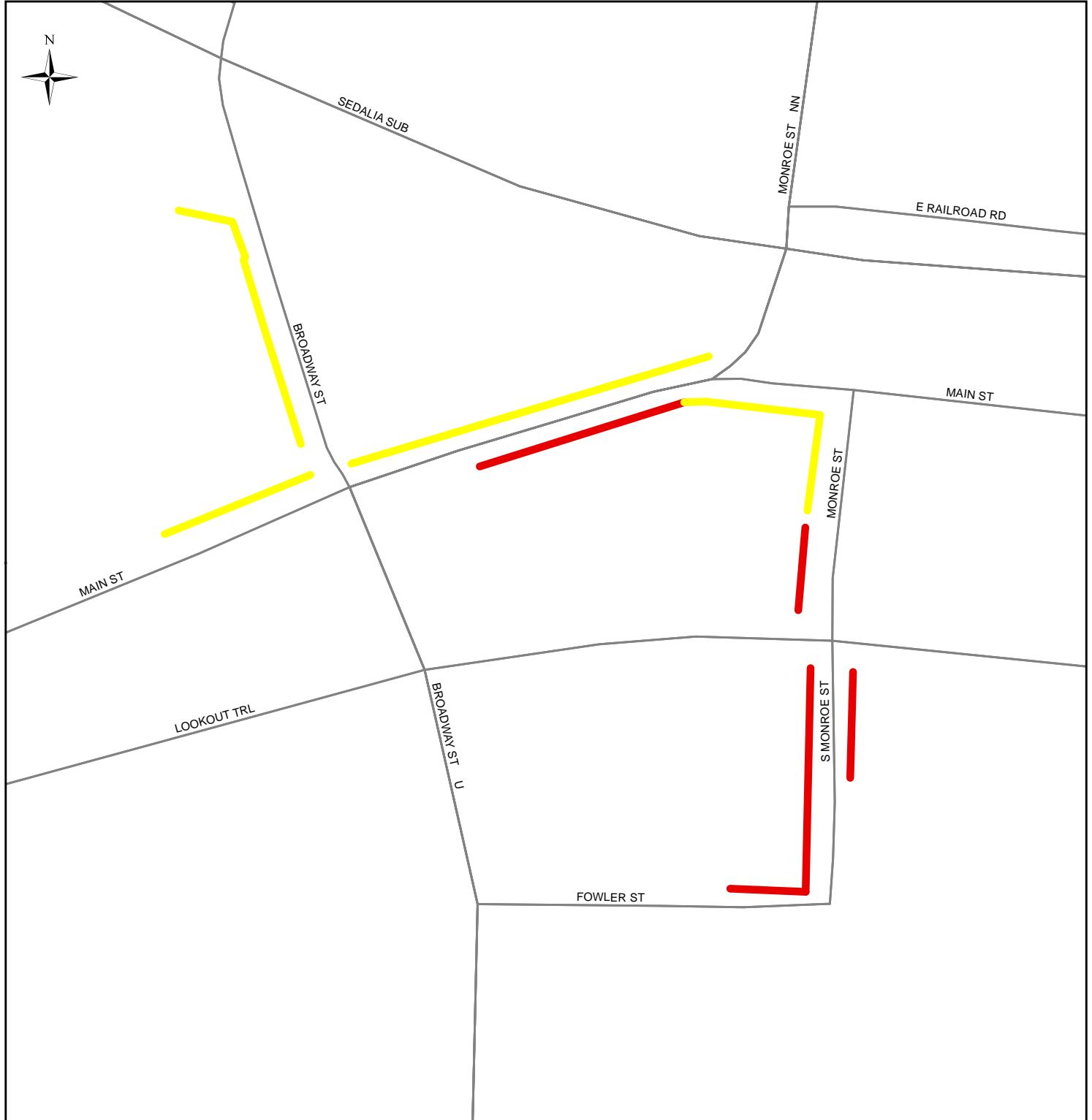
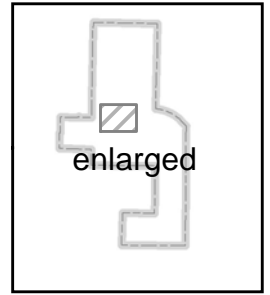
## Sidewalk Conditions

— street  
□ city limits

### Condition

- GOOD (0 ft.)
- FAIR (1,143 ft.)
- POOR (764 ft.)

**Total sidewalks: 1,907 ft.**



0 0.015 0.03 0.06 Miles

# Lohman, MO

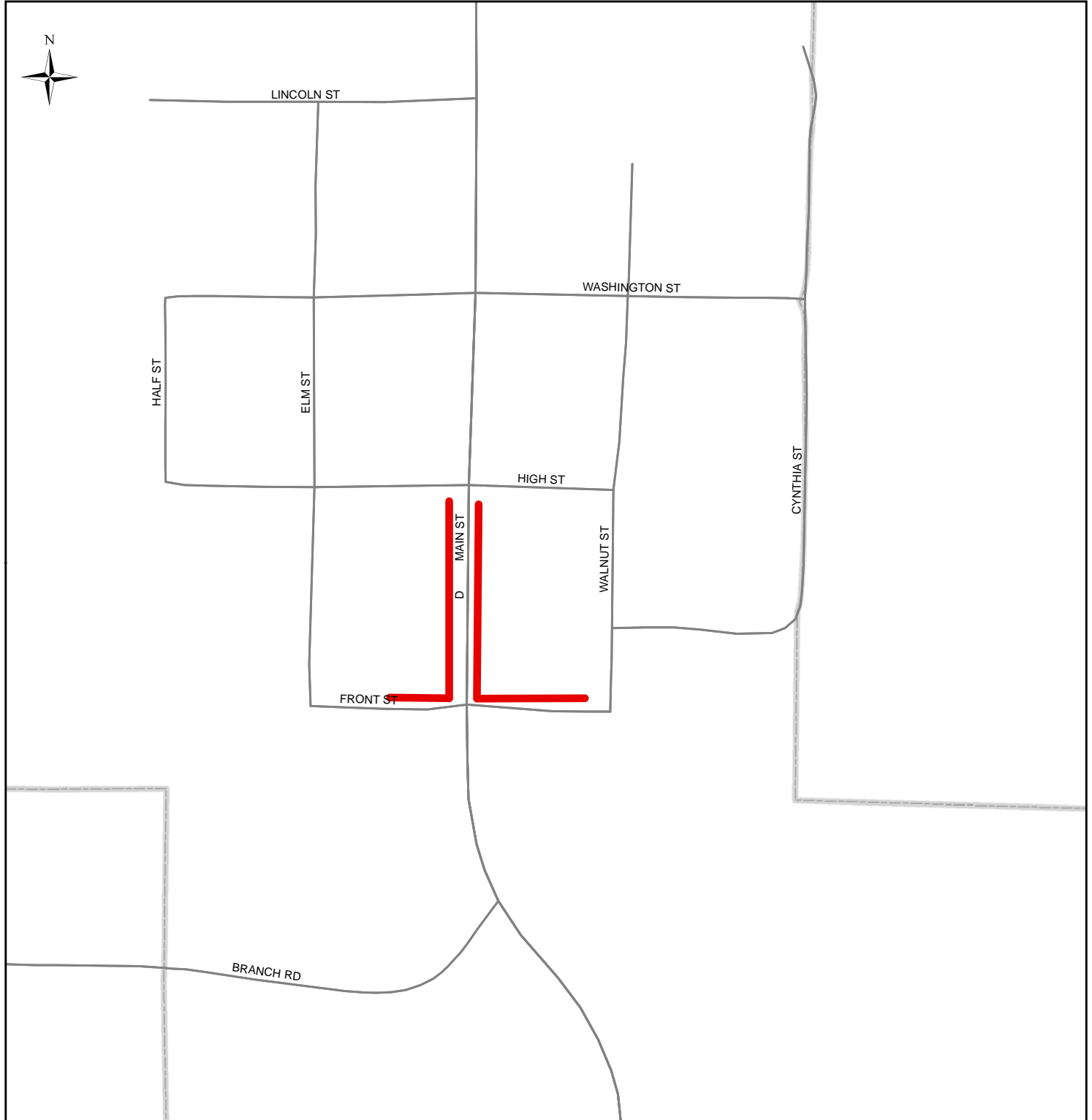
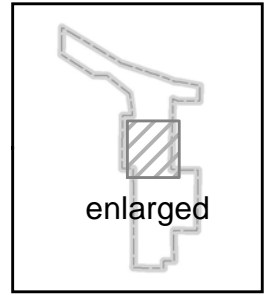
## Sidewalk Conditions

— street  
□ city limits

### Condition

- GOOD (0 ft.)
- FAIR (0 ft.)
- POOR (982 ft.)

**Total sidewalks: 982 ft.**



0 0.03 0.06 0.12 Miles

# Russellville, MO

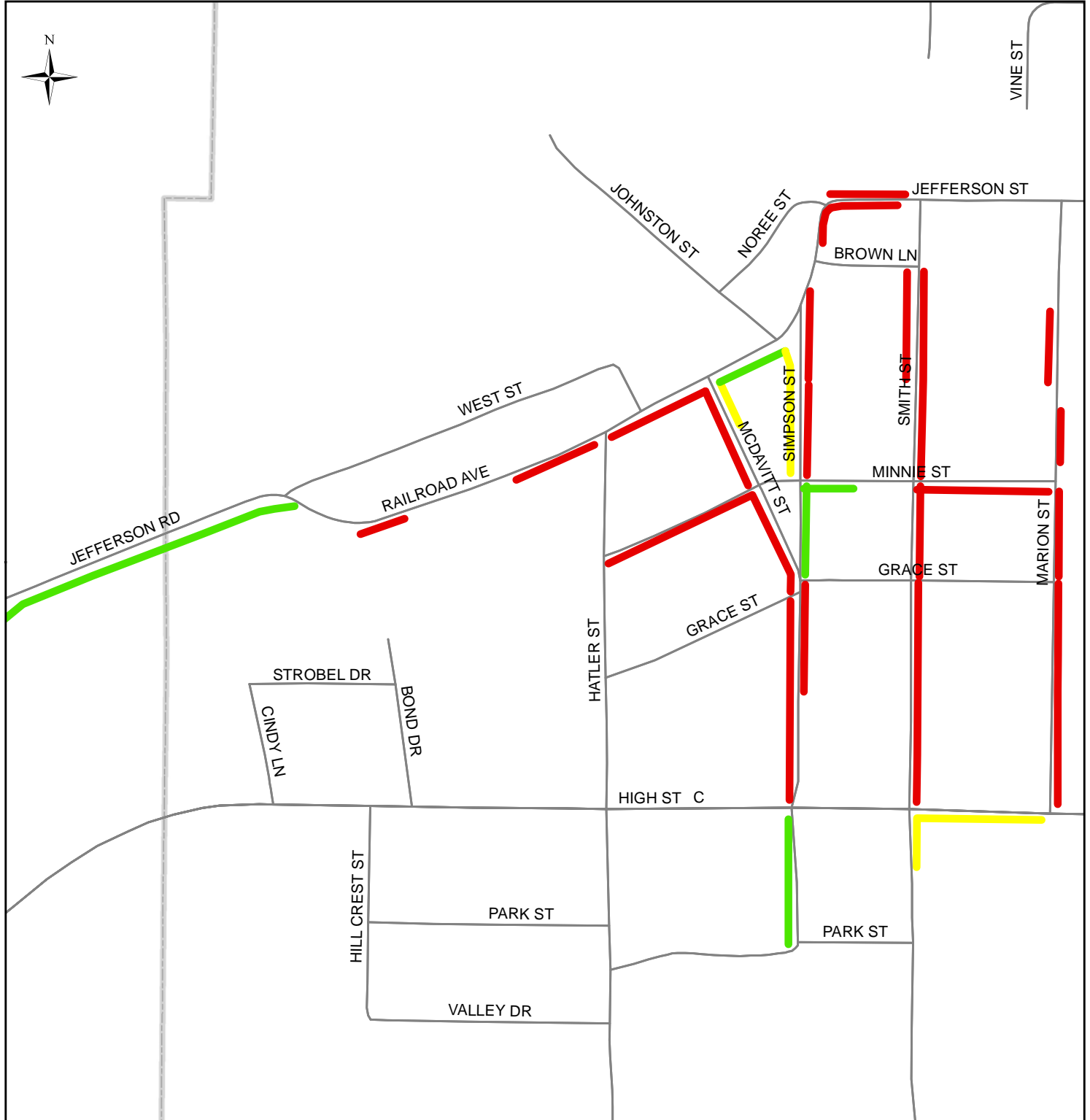
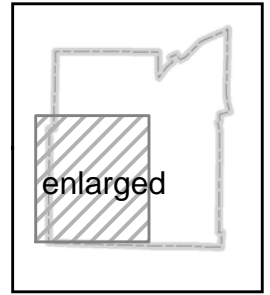
## Sidewalk Conditions

— street  
 □ city limits

### Condition

- █ GOOD (1948 ft.)
- █ FAIR (1018 ft.)
- █ POOR (7254 ft.)

**Total sidewalks: 10,220 ft.**



0 0.05 0.1 0.2 Miles

# St.. Thomas, MO

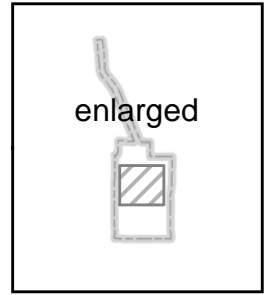
## Sidewalk Conditions

— street  
□ city limits

### Condition

- GOOD (401 ft.)
- FAIR (773 ft.)
- POOR (0 ft.)

**Total sidewalks: 1174 ft.**



0 0.035 0.07 0.14 Miles

# Taos, MO

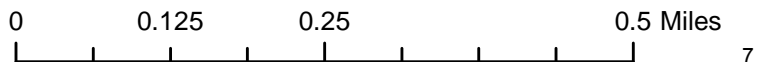
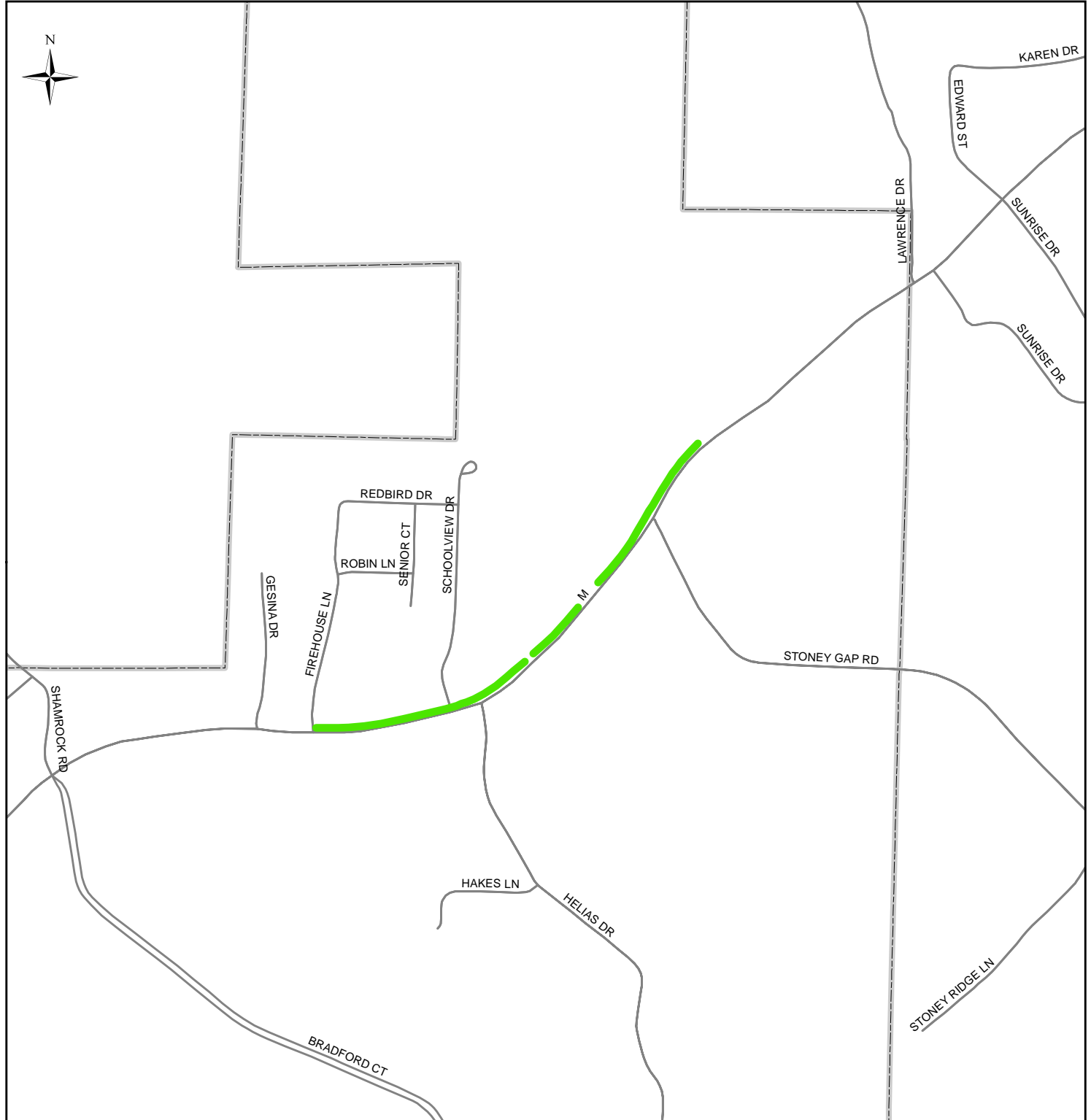
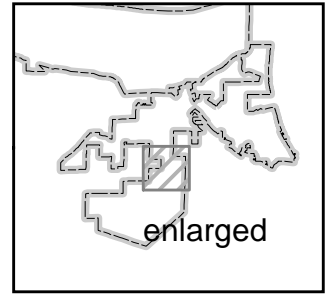
## Sidewalk Conditions

— street  
□ city limits

### Condition

- GOOD (2,707 ft.)
- FAIR (0 ft.)
- POOR (0 ft.)

**Total sidewalks: 2,707 ft.**





# Wardsville, MO

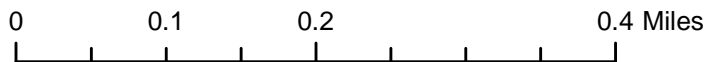
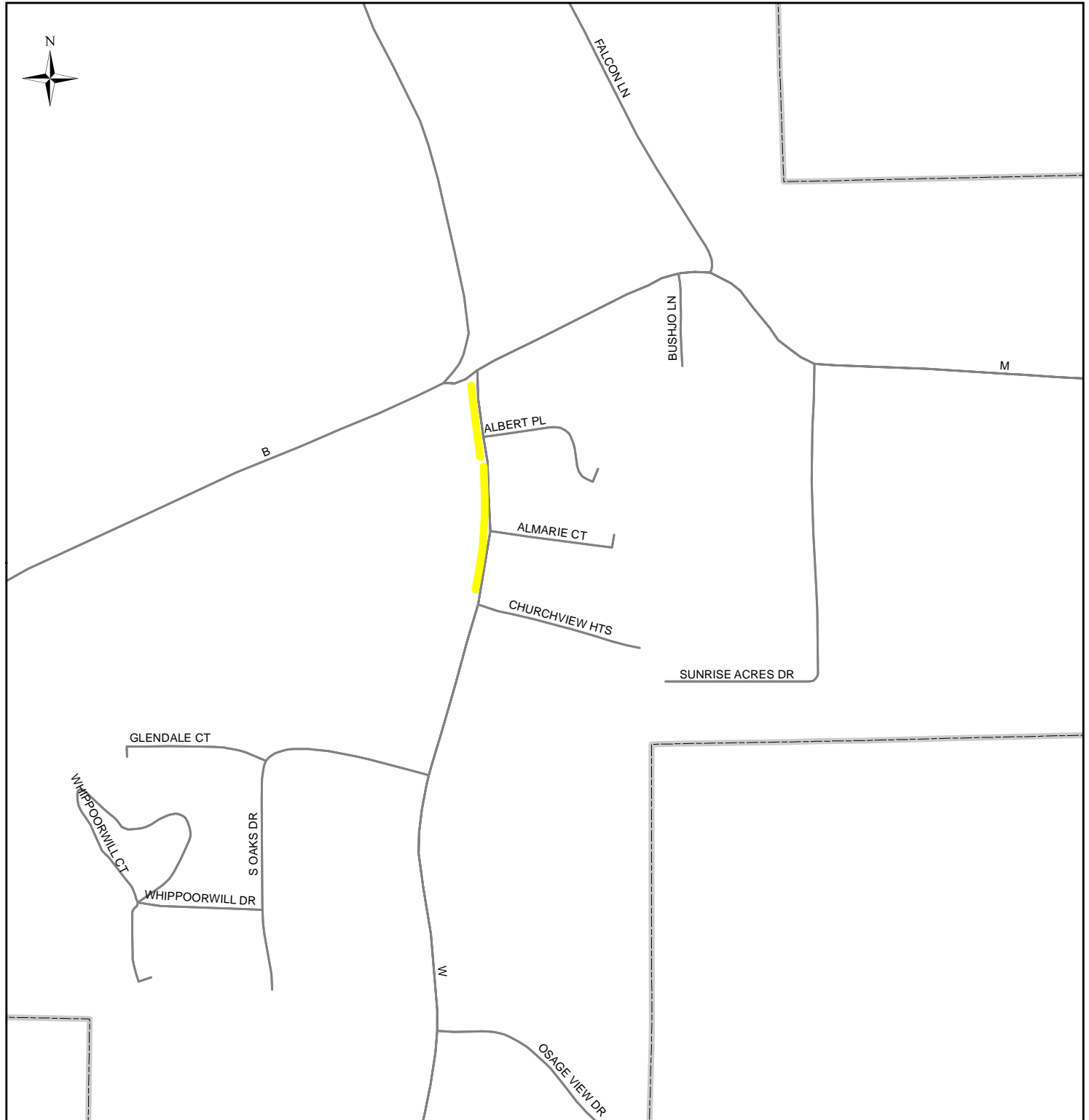
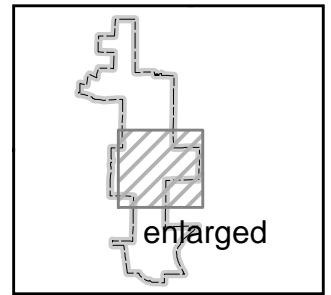
## Sidewalk Conditions

— street  
□ city limits

### Condition

- GOOD (0 ft.)
- FAIR (945 ft.)
- POOR (0 ft.)

**Total sidewalks: 945 ft.**



## Sidewalk Surveys

All communities in the Mid-Missouri Regional Planning Commission Region were sent a survey to understand current conditions and future needs concerning sidewalks. Copies of those surveys that were returned are included in this section. In compiling information received from surveys and by individual inspection of sidewalks in each community the following general overview of condition was created.

	<b>Survey feedback</b>	<b>General Inspection</b>
<b>Centertown</b>	no survey returned	Most sidewalks are navigable, fair to poor condition. Several areas where buckling has occurred, causing impediments. Also vegetation and lack of connectivity between sections.
<b>Lohman</b>	no survey returned	Sidewalks are very steep in some areas. Sidewalks along Front St. are disintegrating and vegetation may make navigation difficult for some.
<b>Russellville</b>	No comprehensive sidewalk plan, sidewalks are viewed as high importance, there are two public schools located within or just outside city limits - both connected by sidewalks. The city is currently upgrading some existing sidewalks with "Safe Routes to School" funding.	The portions near city hall and the post office are in good condition with good access for disability needs. Most sidewalks are in need of reconstruction due to vegetation, specifically several areas where tree roots have buckled the sidewalk. Also several areas where the sidewalks are crumbled or have gaps.
<b>St. Thomas</b>	no survey returned	Few sidewalks exist. Those around the school are in good condition. There is a need for better connectivity between sections.
<b>Taos</b>	no survey returned	One stretch of sidewalk on Rt. M. Fairly new, with good connectivity, ramps, and little slope.
<b>Wardsville</b>	The city has no "city maintained" sidewalks, existing sidewalks are maintained by church, school, and bank. No comprehensive sidewalk plan, sidewalks are viewed as high importance, there is a Catholic School within the city limits. New 2008 ordinance requires construction of sidewalks with new development.	Small section exists between church, school, and bank. Fair condition due to some vegetation and sections where there is minor buckling between seams.



10. Is your jurisdiction actively seeking to expand existing sidewalks:

At this time

In the future

We will not seek to expand.

FUNDING, SIDEWALK MAINTENANCE, SIDEWALK EASEMENTS ARE MAJOR HURDLES

11. If expansion is being considered, has your jurisdiction created a comprehensive sidewalk plan?

Yes, the plan has been completed.

Yes, the plan is currently in development.

No, but we are considering it.

ANY NEW DEVELOPMENT REQUIRES CONSTRUCTION OF SIDEWALKS; ADDED BY ORDINANCE, 2007-2008

12. If expansion is being considered, what areas of your jurisdiction are being targeted for sidewalk expansion/improvements?

- AROUND SCHOOLS {PUBLIC SCHOOLS HAVE SIDEWALKS ON THEIR GROUNDS; WHICH THEY MAINTAIN}
- FROM CHURCH GROUNDS TO BANK  
(NOTE: CHURCH CURRENTLY HAS SIDEWALKS IN FRONT OF THE CHURCH/CATHOLIC SCHOOL/CEMETARY - MAINTAINED BY THE CHURCH)
- FROM FIRE HOUSE TO CHURCH

13. If expansion is being considered, which of the following reasons best describes the city/village's motive?

Health/wellness

Beautification

Accessibility

Reducing environmental impact

Other: \_\_\_\_\_

Please return to:

Katrina Thomas  
Mid-Missouri Regional Planning Commission  
PO Box 140  
Ashland, MO 65010

Phone: 573-657-9779  
Fax: 573-657-2829  
Email: [katrinathomas@mmrpc.org](mailto:katrinathomas@mmrpc.org)





10. Is your jurisdiction actively seeking to expand existing sidewalks:

At this time

In the future

We will not seek to expand.

11. If expansion is being considered, has your jurisdiction created a comprehensive sidewalk plan?

Yes, the plan has been completed.

Yes, the plan is currently in development.

X No, but we are considering it.

12. If expansion is being considered, what areas of your jurisdiction are being targeted for sidewalk expansion/improvements? *SRTS*

*FROM JEFFERSON ST. to Rt. C ON Simpson,  
Smith & MARION St.*

13. If expansion is being considered, which of the following reasons best describes the city/village's motive?

Health/wellness

Beautification

Accessibility

Reducing environmental impact

Other: \_\_\_\_\_

**Please return to:**

**Katrina Thomas  
Mid-Missouri Regional Planning Commission  
PO Box 140  
Ashland, MO 65010**

**Phone: 573-657-9779  
Fax: 573-657-2829  
Email: [katrinathomas@mmrpc.org](mailto:katrinathomas@mmrpc.org)**